

NOTES: THESE DIMENSIONS DESCRIBE SPECIFICATIONS. NO OTHER DATA ARE USED IN ANY FURTHER OTHER THAN IN CONNECTION WITH A SPECIFICALLY RELATED OPERATIONAL PROCEDURE. THE USER OF THIS DOCUMENTATION SHALL BE RESPONSIBLE FOR THE PROPER INTERPRETATION OF THIS DOCUMENTATION AND THE FACT THAT THE GOVERNMENT HAS MADE AVAILABLE THIS DOCUMENTATION DOES NOT CONSTITUTE AN ENDORSEMENT OR RECOMMENDATION OF ANY PRODUCT OR SERVICE, NOR DOES IT CONSTITUTE AN ENDORSEMENT OF ANY DESIGN OR METHOD OF OPERATION. THE USER OF THIS DOCUMENTATION SHALL BE RESPONSIBLE FOR THE PROPER INTERPRETATION OF THIS DOCUMENTATION AND THE FACT THAT THE GOVERNMENT HAS MADE AVAILABLE THIS DOCUMENTATION DOES NOT CONSTITUTE AN ENDORSEMENT OR RECOMMENDATION OF ANY PRODUCT OR SERVICE, NOR DOES IT CONSTITUTE AN ENDORSEMENT OF ANY DESIGN OR METHOD OF OPERATION.

THIS DOCUMENT HAS BEEN PREPARED BY THE GOVERNMENT AND MAY BE REPRODUCED AND USED IN CONNECTION WITH ANY GOVERNMENT PROCUREMENT OR PERFORMANCE AGREEMENT.

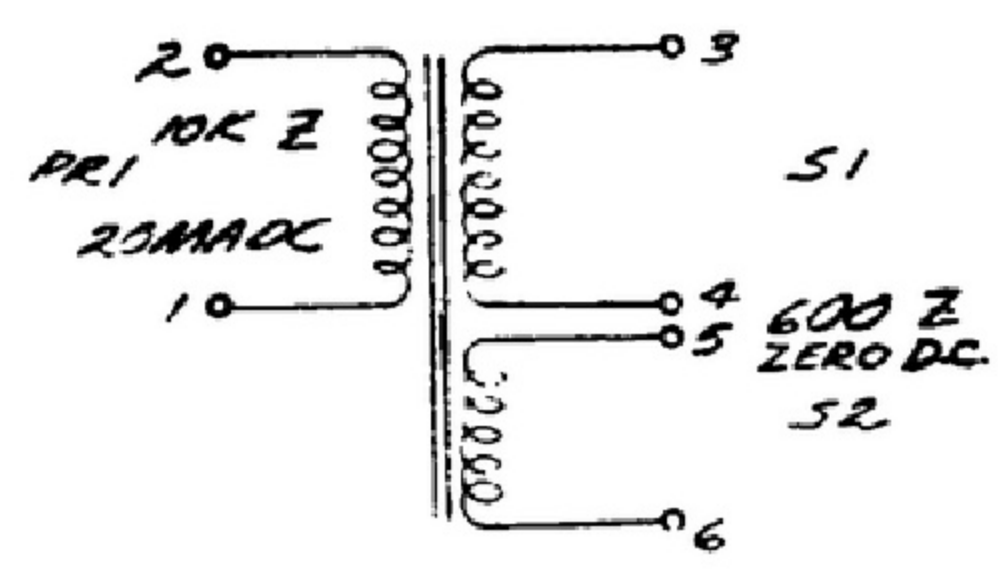
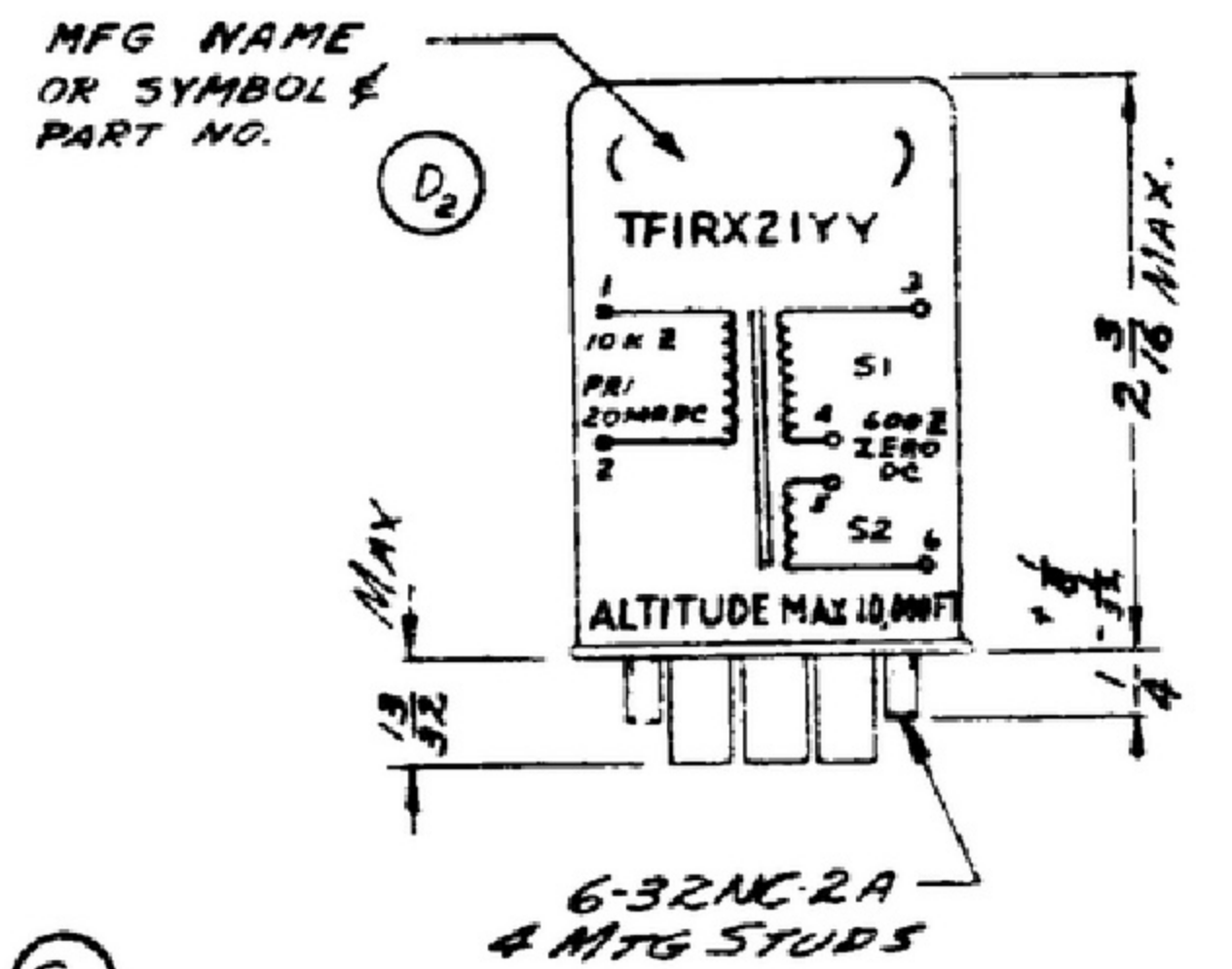
FOR INFORMATION ONLY. CONTRACTOR MAY AT HIS OPTION DEVIATE FROM THESE PROCESS DETAILS.

SWE. APPROVAL		REVISIONS			
SYM	PR10042-B	SYM	DESCRIPTION	DATE	APPROVAL
		A ₆	A ₁ -REMOVED NOTATION A ₂ -REMOVED NOTE 2; A ₃ -ADDED NOTE A ₄ -1/4, 1/2 WAS 3/32, 1 9/16 RESP. A ₅ -173 WAS .171; A ₆ -WAS TFIRX13YY.	26 OCT 59	43000-PC -89-AI-57 PME
		B ₄	B ₁ -ADDED IN ACCORDANCE WITH MIL-T-27, TYPE TFIRX21YY. B ₂ -P213E WAS P213P B ₃ -+180V.D.C WAS +175 V.D.C. B ₄ -WAS SEE NOTE 2.	28 FEB 60	43000-PC-57 PME
		C ₂	(1)-RELOCATED SILKSCREENING. (2)-ADDED NOTE 2.	5 DEC 60	43000-PC-57 PME
		D	(1) ADDED NOTATION & NOTE (2) ADDED MARKING TO VIEW	21 OCT 61	43000-PC-57 PME
		E ₁	E ₁ RELOCATED MARKING	12 OCT 60	43000-PC-57 PME

(A₆) TFIRX21YY

(A₁) (B₄)

(D₁) MARKINGS SHOULD APPEAR IN THIS MANNER ON SIDE INDICATED BY NOTE 2



NOTES:
1. PART MAY BE #17594 AS SUPPLIED BY CHICAGO STANDARD TRANSFORMER CORP., CHICAGO, ILLINOIS, OR EQUAL, PROVIDING IT MEETS THE FOLLOWING REQUIREMENTS AND DIMENSION SHOWN.

- (A₂)
- (B₁) DESCRIPTION: AUDIO OUTPUT TRANSFORMER IN ACCORDANCE WITH MIL-T-27, TYPE TFIRX21YY. DISTORTION: LESS THAN 8% AT 500 MHZ AND 400 CPS. AT 85°C WHEN CONNECTED IN TEST CIRCUIT SHOWN ON DRAWING. RESPONSE: IN ADDITION TO THE FREQUENCY RESPONSE CHARACTERISTICS SPECIFIED IN TABLE I, THE OUTPUT MUST BE WITHIN ±1.5 DB OF 1000 CPS REF. BETWEEN 200 AND 3500 CPS. OPERATING LEVEL: 1 WATT MAXIMUM, 500 MHZ NOMINAL. DUTY CYCLE: CONTINUOUS.
- (B₂) AMBIENT TEMPERATURE RANGE: -55°C TO +85°C. FINISH: P213E PER SPEC MIL-F-14072. SAMPLE APPROVAL: SAMPLE APPROVAL MUST BE OBTAINED FROM THE PRIME CONTRACTOR BEFORE PROCEEDING WITH PRODUCTION. ALL THE ELECTRICAL AND MECHANICAL REQUIREMENTS SPECIFIED WILL BE CHECKED BEFORE GRANTING SAMPLE APPROVAL. SHOCK: UNIT MUST WITHSTAND SHOCK TEST PER METHOD 11 OF SPEC. MIL-T-27. TERMINALS: TERMINAL DESIGN IS OPTIONAL (PROVIDING TERMINAL LENGTH CONFORMS TO SPECIFIED LENGTH DIMENSIONS) BUT SHALL HAVE PRIOR SPEC MIL-T-27 PROTOTYPE APPROVAL AND SHALL BE APPROVED BY THE PRIME CONTRACTOR BEFORE PROCEEDING WITH PRODUCTION. TERMINALS SHALL BE IDENTIFIED BY COUNTING CLOCKWISE FROM WHITE INDEXING DOT.
- (A₃) ALTITUDE: OPERATING ALTITUDE 10,000 FEET MAXIMUM.
- (C₂) 2. MARKING SHALL APPEAR ON THIS SURFACE, AND INCLUDE MFR'S PART NO. (* 283275).
- (D₁) MARKING: AFFIX ALL CHARACTERS AND MARKINGS IN VERTICAL GOTHIC 3/32 INCHES HIGH IN A PERMANENT CONTRASTING COLOR IN ACCORDANCE WITH AND TO MEET THE TEST REQUIREMENTS OF SPECIFICATION MIL-M-13231.

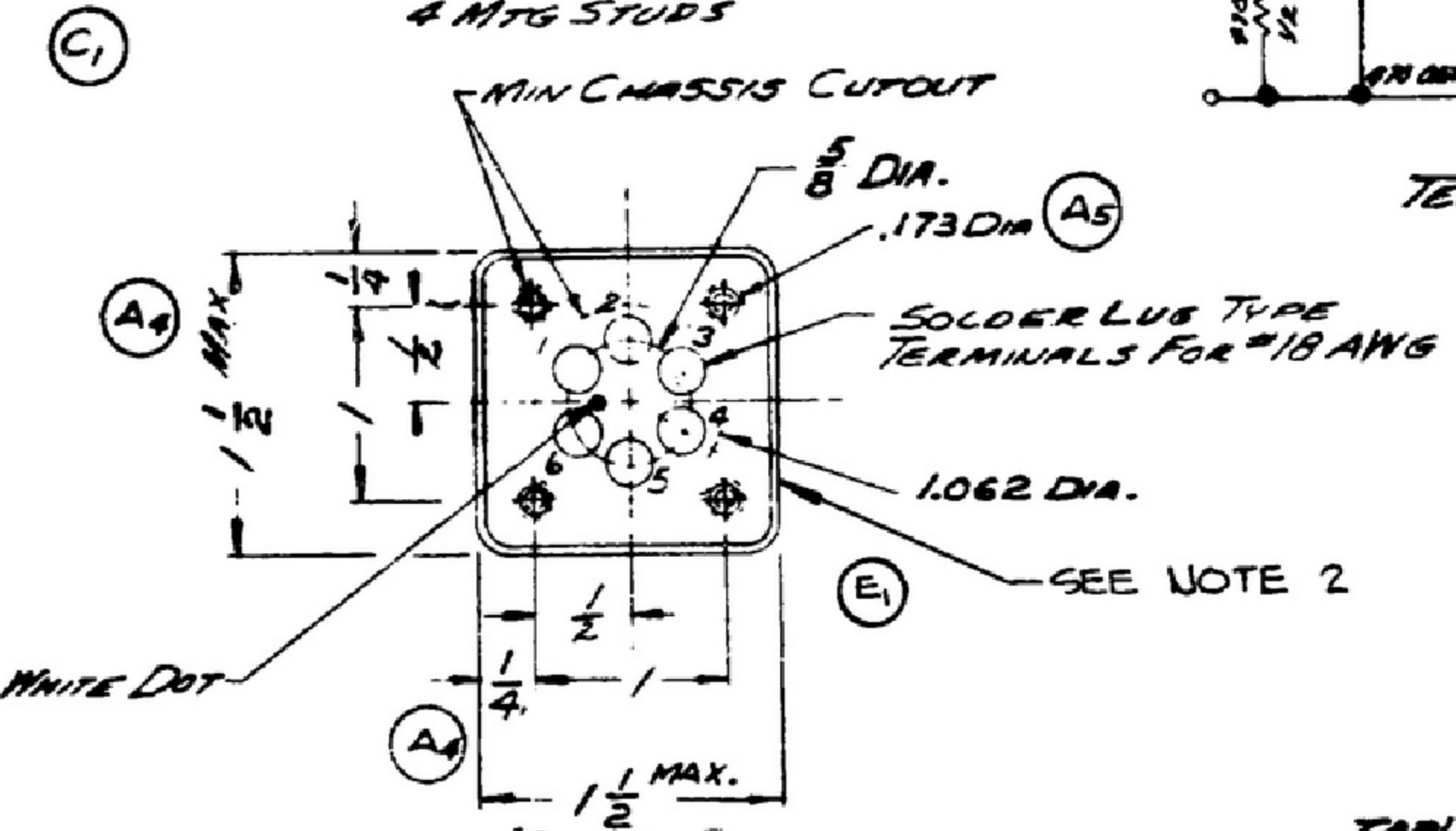
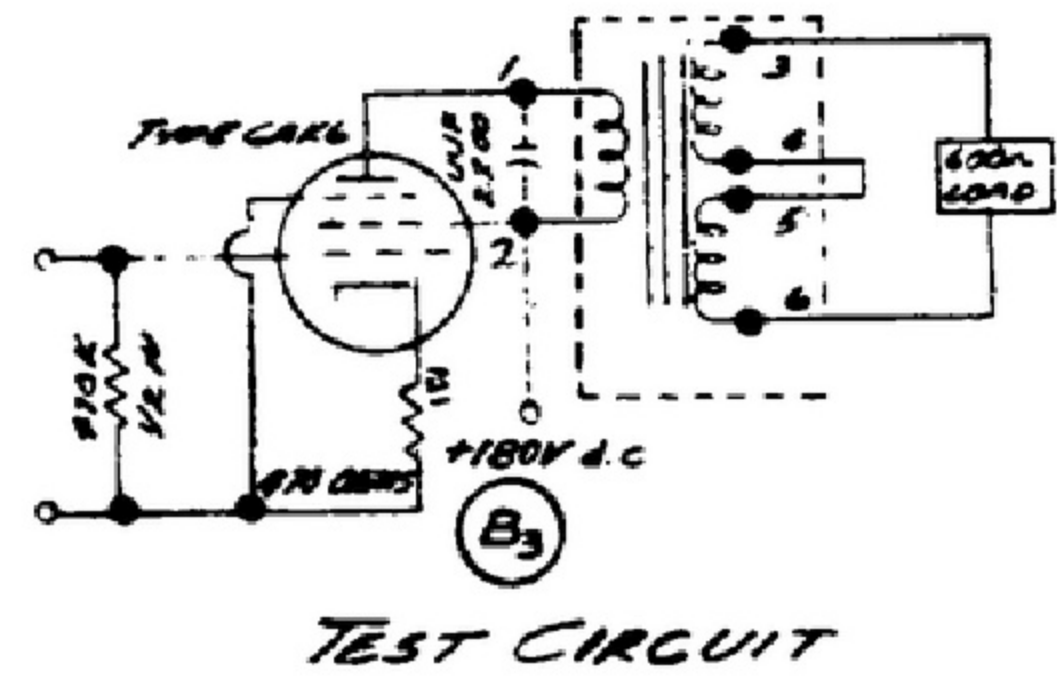


TABLE I
FREQUENCY RESPONSE

150 CPS	±3 DB
1000 CPS	ZERO REF
4000 CPS	±2 DB

TABLE II
NOMINAL IMPEDANCE

LEAD	LEAD	OHMS
1	2	10000
3	6	600
4, 5		CT

EAK NO. 1500-0168

LIST OF MATERIAL

QUANTITY	UNIT	DESCRIPTION	DATE	BY

<p>558-6340-006 R SMDLAB01 SCAL283275</p> <p>CALLING NO. QTY NEXT ASSY USED ON</p> <p>APPLICATION</p>	<p>DRAWN D. WRIGHT</p> <p>CHECKED BG</p> <p>APPROVED</p> <p>UNLESS OTHERWISE SPECIFIED: DECIMAL DIMENSIONS INCLUDING HOLE SIZE MAY VARY ±.005 FRACTIONAL DIMENSIONS INCLUDING HOLE SIZE MAY VARY ±.01 MACHINED ANGLES MAY VARY ±1° SHEARED ANGLES MAY VARY ±.25° BROKEN ANGLES MAY VARY ±.1° ECCENTRICITY BETWEEN ANY DIAMETERS ON THE SAME CENTERLINE SHALL NOT EXCEED 0.10 TOTAL TWO-CATCHER READING. ALL DIMENSIONS ARE FINISH DIMENSIONS INCLUDING APPLIED FINISH AND ARE GIVEN IN INCHES</p>	<p>COLLINS-RADIS-59-REVIS-5488-59-000-000-000</p> <p>MRJG-PH-51-93</p> <p>SIGNAL CORPS</p> <p>REVIEWED PME</p> <p>APPROVED HLY PME</p> <p>DATE 10 SEPT 58 SCALE 1/1</p>	<p>TRANSFORMER</p> <p>DEPARTMENT OF THE ARMY SIGNAL CORPS ENGINEERING LABORATORIES FORT MONMOUTH NEW JERSEY</p> <p>5M-C-283275</p>
---	---	---	--